

- Release Notes -

Product: RiskMan

Version: 22.03.02

Overview: This document describes all fixes made to RiskMan version 22.03.02
(release date March 2022)

Last updated: April 22, 2022

© 2021 RLDatix. All rights reserved.

CONTENTS

- Introduction 2
- Application Management 2
 - Security Testing..... 2
 - Regression Testing 3
 - Functionality Testing 3
- Enhancements and Changes 3
- New Features and Changes 4
 - Log Access 4
 - Excel Export Format..... 5
- Fixes..... 6
- Known Issues..... 13

INTRODUCTION

This document provides an overview of new features, and enhancements to existing features, included in RiskMan version **22.03.02**. The earlier released version of RiskMan was 2109.

All new features introduced in a new version of RiskMan are turned OFF by default, unless stated otherwise. This allows for decision to adopt new features, decide who will use the new features and complete change management tasks.

This document includes corrections, improvements, bug fixes, and other “invisible” changes made to the back end of the system.

Should you have further questions about the content of this document, please contact RiskMan Support on **+61 3 9686 5456**, or via [SupportHUB](#)

If you would like to enquire about formal training for any of the features listed in this document, please contact the training team on **+61 3 9686 0009**, or via email: training@riskman.net.au.

APPLICATION MANAGEMENT

Security Testing

Each release is subjected to automated testing against the 10 known Open Web Application Security Project (OWASP) security vulnerabilities. The top 10 known OWASP security vulnerabilities can be viewed here <https://owasp.org/www-project-top-ten/>

In the event of a High rated outcome, RLDatix undertakes a risk assessment to ensure any resolution implemented will not result in a negative impact on the application. The vulnerability will either be resolved prior to release, or if unable to be resolved, the vulnerability will be internally managed on the RLDatix APAC Risk Register.

If the event of a medium outcome, then RLDatix will work to resolve the vulnerability, where possible prior to release or if unable, then the vulnerability will be placed on the development pathway.

If the event of a Low or Information Only outcome, RLDatix consider the applicability and if to be resolved included on the product roadmap for future development.

Regression Testing

Regression testing occurs prior to every release and focuses on the likelihood that Bugs may have been reintroduced into the latest version.

Any reintroduced Bugs are resolved, or the feature disabled to enable release, and the Bug managed as part of the development pathway.

Functionality Testing

Functionality testing is completed by RLDatix employees to ensure that all features are working as expected. The results are reviewed, and any issues are resolved prior to release.

ENHANCEMENTS AND CHANGES

Enhancements and changes are rated on a scale of 1 to 3 by their significance and need for training. Some enhancements and modifications made to existing system features might be invisible

Significance Scale Explanation

● ○ ○	A small change that would scarcely be noticed, or something has been made much easier than before
● ● ○	A significant change: expansion of existing functionality that may change the way you use the system
● ● ●	A major enhancement or modification that would require proper planning to be rolled out

Need for Training Scale Explanation

● ○ ○	Users may only need to be told about the change; intuitive and simple, so usually no training required
● ● ○	A change that will likely require internal training to ensure proper use; you may pick it up yourself
● ● ●	A change which is highly involved and is likely to require RiskMan training in its proper use

Note: This release includes capabilities related to CIMS. CIMS is to allow for compliance with reporting requirements. This information and detail are only available / applicable to CIMS clients.

NEW FEATURES AND CHANGES

Log Access

Significance: ● ○ ○

Need for training: ● ○ ○

Module(s) / Functionality: Entry Log

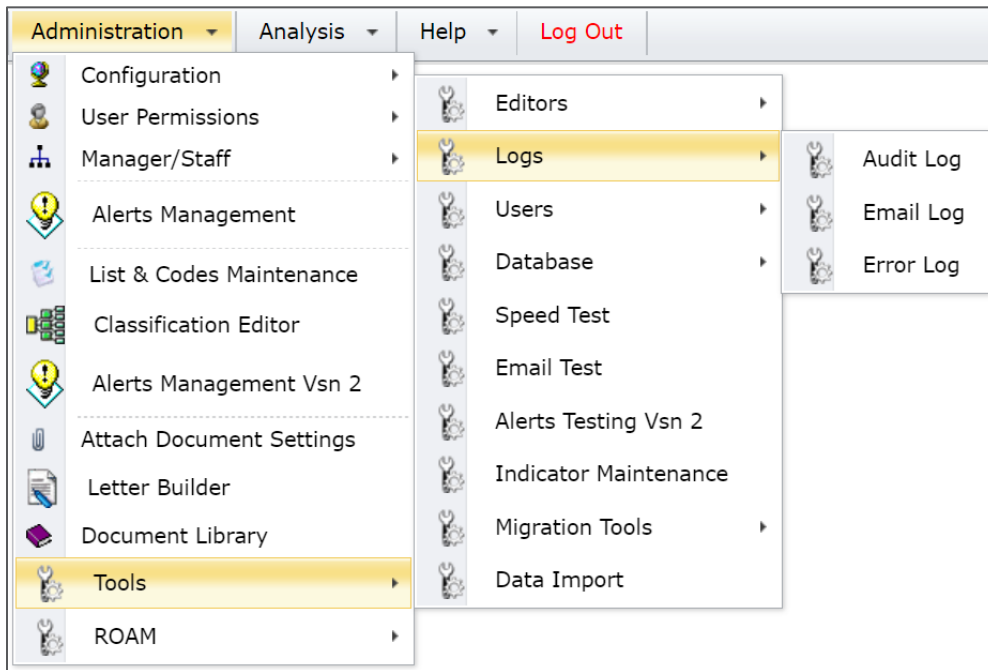
Key: RMI-7943

Previously, all logs utilised the 'Global Settings' permission generally reserved for System Administrators. User permissions within the User Templates have been applied to specifically determine if a user can access either of the Error Log, Email Log and Audit Log regardless of if they have System Administration rights.

The associated permissions:

Administration > User Templates > General > [Template Name]

- Can access global Email Log
- Can access Error Log
- Can access Audit Log



Excel Export Format

Significance: ● ○ ○

Need for training: ● ○ ○

Module(s) / Functionality: Reports Version 1 and 2

Key: RMI-6629

Implement the ability to produce report in XLSX format. XLSX format allows a higher row limit in comparison to XLS format.

FIXES

Error displayed when attempting to open a partially completed form via the auto save feature

Module(s) / Functionality: Auto Save

Key: RMI-8004

Error saving Skin Tear sub form data from auto save function

Module(s) / Functionality: Auto Save

Key: RMI-7987

Performance improvement to the auto save feature. Faster response time to open the automatically save data

Module(s) / Functionality: Auto Save

Key: RMI-5092

Error message displayed on Incident forms when attempting to access a saved Shortcut from the HomePage

Module(s) / Functionality: Incidents

Key: RMI-8003

Issue with age fields not clearing when date of birth is removed

Module(s) / Functionality: Incident

Key: RMI-7826

Issue with entering a date in a different format, it would reset the date value to current date

Module(s) / Functionality: Incident

Key: RMI-5311

Issue obtaining visibility of deleted records if the user does not have posting permissions. Not all users need to be posting records to manage deleted records

Module(s) / Functionality: Incidents

Key: RMI-935

If a multi select field was the first field on a form, it would break the form

Module(s) / Functionality: Entry Form

Key: RMI-7777

Issue with warning messages being displayed to a user for future and past date entry rules in the Date of Birth fields

Module(s) / Functionality: Entry Form

Key: RMI-7633

Error screen displayed when attempting to access a saved Shortcut from the HomePage

Module(s) / Functionality: Entry Form

Key: RMI-7986

Issue with the entry page being loaded. At times, it would not load the full page

Module(s) / Functionality: Entry Form

Key: RMI-7548

Radio buttons would display database values instead of the display values when accepting changes to posted records

Module(s) / Functionality: Entry Form

Key: RMI-6754

When the user has an apostrophe (') in their username and is acting as a delegate, an error is displayed when viewing records in listing pages

Module(s) / Functionality: List Page

Key: RMI-7834

Issue filtering within List Pages on specific fields

Module(s) / Functionality: List Pages

Key: RMI-7803

Change Columns unable to save label and sort order changes

Module(s) / Functionality: List Page

Key: RMI-7800

Issue displaying user permissioned fields in Change Column

Module(s) / Functionality: List Page

Key: RMI-7635

Error displaying when a user would click the Change Column icon in a List Page

Module(s) / Functionality: List Page

Key: RMI-3161

When accepting changes to be posted, the changes would not be applied if the field was a radio button list

Module(s) / Functionality: Posting

Key: RMI-7890

A cloned record would display a broken spell check image

Module(s) / Functionality: Clone

Key: RMI-7801

When clicking the Clone & Link button, completed the details on the cloned form then 'Submit' the record, the record is cloned again instead of saving

Module(s) / Functionality: Clone

Key: RMI-1476

When searching for a named user, the User Selector was not finding users by their user site restriction named in their profile

Module(s) / Functionality: User Selector

Key: RMI-7883

Issue logging in as a delegate from the menu by clicking on the user's display name does not switch to that user delegated

Module(s) / Functionality: Delegation

Key: RMI-7546

The recover password page was made redundant, but the menu links were not removed

Module(s) / Functionality: RiskMan Menu

Key: RMI-1226

Issue saving users named as Administrators within the “Grant Admin Tool”

Module(s) / Functionality: Grant Admin Tool

Key: RMI-7823

Error loading the Classification Remapper page

Module(s) / Functionality: Classification Editor

Key: RMI-7802

Unable to delete Report Layout although Global Setting is set to “Yes”

Module(s) / Functionality: Reports

Key: RMI-7977

Error displayed when a user would add a restricted field as their condition to generate a report

Module(s) / Functionality: Reports

Key: RMI-7572

Error displayed when migrating reports from Reports V1 to Reports V2

Module(s) / Functionality: Reports

Key: RMI-7693

Scheduled reports unable to generate reports using Excel workbook XLSX format option

Module(s) / Functionality: Report Scheduler

Key: RMI-7952

Error when selecting more than one value from a multi-select field within filters

Module(s) / Functionality: Reports V1

Key: RMI-7877

Report layout does not remain selected when a report is previewed

Module(s) / Functionality: Reports V2

Key: RMI-7637

Issue with Advance Conditions. When using “is one of” or “is not one of”, if the report was generated, the user would return to the Advance Condition and only single selection was displayed

Module(s) / Functionality: Reports V2

Key: RMI-7578

Issue with the display of locations in basic filters. Sometimes the locations would display to be selected and at times, the locations would not display

Module(s) / Functionality: Reports V2

Key: RMI-7513

Issue with advance filters and adding a condition that has a comma in its value. Previewing that report returns 0 records even when there is data available

Module(s) / Functionality: Reports V2

Key: RMI-7490

Type of injury field displays as free text instead of a value list in advanced conditions when generating a report

Module(s) / Functionality: Reports V2

Key: RMI-8065

Broken SQL preventing Risk Profile & Treatment Plan report generating

Module(s) / Functionality: Risk | Reports

Key: RMI-7963

Error presenting if a client is using Azure when trying to access the InfoCentre when a read only user is available

Module(s) / Functionality: InfoCentre

Key: RMI-7392

Error displaying when saving sharing permissions of Indicator groups

Module(s) / Functionality: Indicators

Key: RMI-4389

Icon '%>' displays in a User Profiles within the Associated Network Username field

Module(s) / Functionality: User Management

Key: RMI-7753

Error displayed when applying Template Changes

Module(s) / Functionality: User Management

Key: RMI-7734

If a field that utilises Radio List is set to Read Only in a User Profile, the form ignores the read only setting

Module(s) / Functionality: User Management

Key: RMI-7072

The User Management menu was not displaying when only the “Can edit General” User Profiles was selected in a user profile.

Module(s) / Functionality: User Management

Key: RMI-1115

User Templates when searching Entry Updates and Reporting Restrictions would not allow users to search for values that had Unicode’s

Module(s) / Functionality: User Management

Key: RMI-3905

When the email sent to users contained a link to open the record its related to, it was taking users to the “unposted” version of that record. It is expected to go to the “posted” version. The most recent version of that record

Module(s) / Functionality: Alerts V2 (Email)

Key: RMI-7437

Issue entering duplicate alert name clearing all entered conditions

Module(s) / Functionality: Alerts V2

Key: RMI-6060

When clicking on “Test Condition” in alerts V2 condition builder, posted record (s) are not displayed

Module(s) / Functionality: Alerts V2

Key: RMI-1434

Issue applying font changes within alert emails

Module(s) / Functionality: Alerts V2

Key: RMI-1305

RiskMan Release Notes

Unable to open Roam Script builder page

Module(s) / Functionality: Roam

Key: RMI-7962

Fix the calculation error of login timeout when servers are in different time zones

Module(s) / Functionality: Login Timeout

Key: RMI-7832

Data Transmission error where no data about the error was displayed / returned

Module(s) / Functionality: CIMS

Key: RMI-7798

KNOWN ISSUES

No known issues reported